



**NOVA**  
SUPPLY

# PANELES

(829) 216-9224

Plaza Roaldi, local 308, El Millon, D.N.

✉ [info@novasupplyrd.com](mailto:info@novasupplyrd.com)

🌐 [www.novasupplyrd.com](http://www.novasupplyrd.com)

# Clean Room Panel

- CE certificated and conform to GMP standard;
- Made of optional steel sheet and optional core material, hermetically sealed by steel keels at four sides;
- No dust production and accumulation, easy cleaning, fire prevention, sound and heat insulation, etc;
- Widely used in pharmaceuticals, hospital ,electronics, food industry, etc.



**CE Certificate**



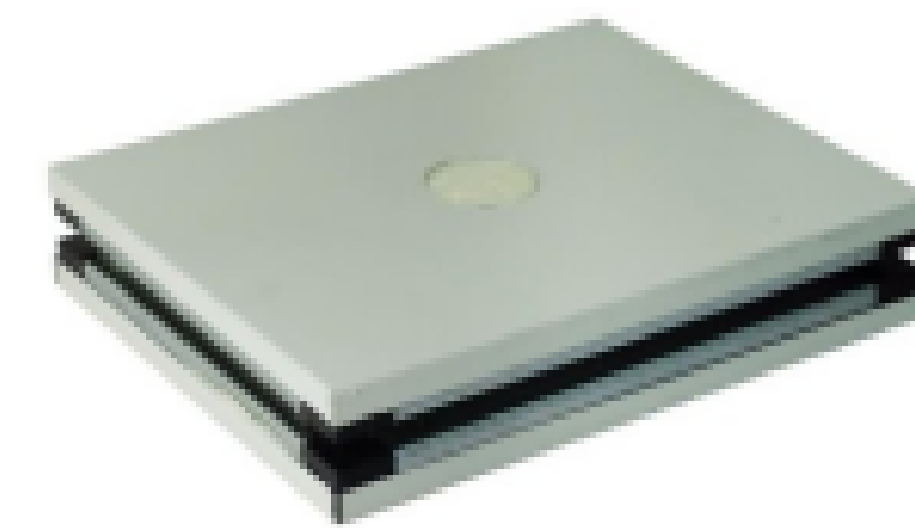
**EPS Panel**

- Density:6~18kg/m<sup>3</sup>;
- Lightweight and load-bearing;
- Used as both wall panel and ceiling panel.



**Rock Wool Panel**

- Density:120~130kg/m<sup>3</sup>;
- Class A fireproof;
- Used as wall panel.



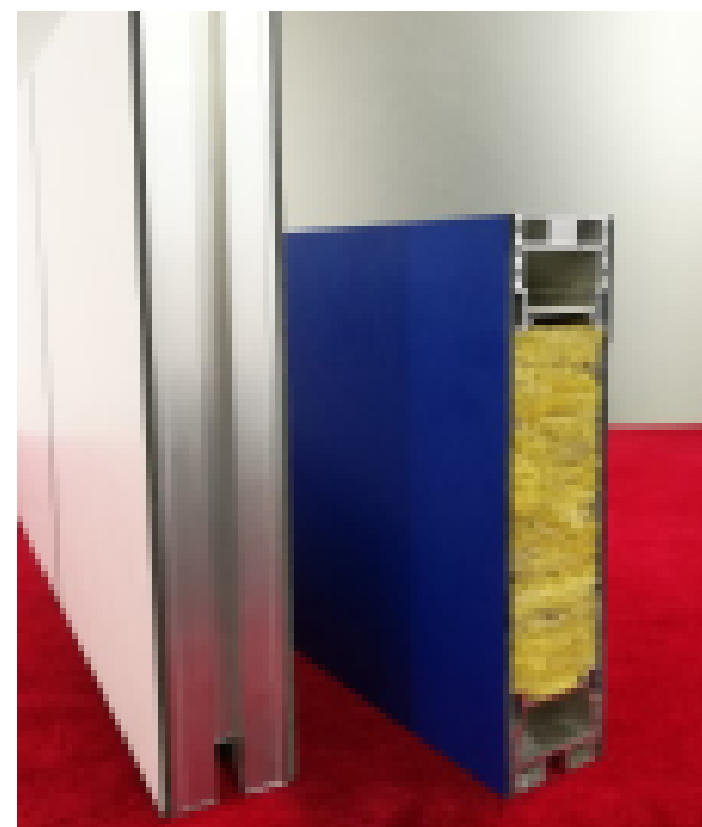
**PU Panel**

- Density:30~45kg/m<sup>3</sup>,
- Thermal insulated ,load-bearing;
- Used as both wall panel and ceiling panel.



**Glass Magnesium Panel**

- Load-bearing and strong strength;
- Used as ceiling panel.



**HPL Panel**

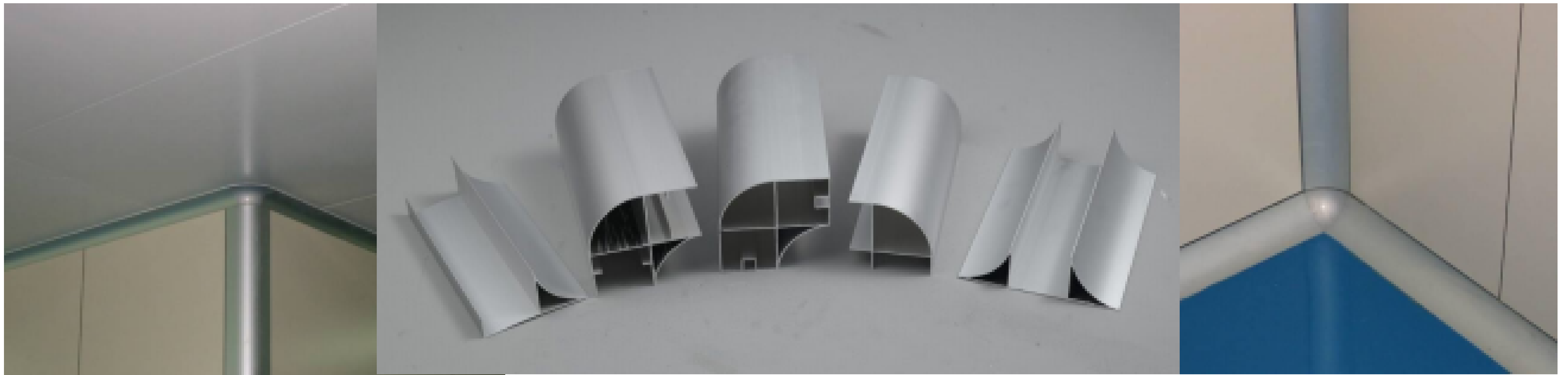
- Anti-scratch , anti-corrosion;
- Used as wall panel.

Model	SP-L*W*T		HPL-L*W*T	
	1182 series	982 series	1200 series	1000 series
Width (mm)	1182	982	1200mm	1000mm
Length (mm)	≤6000		≤3000	
Thickness (mm)	50 (Customized if required)			
Surface (Optional)	0.5mm thickness color coated steel sheet/ SUS304		3mm thickness HPL	
Core Material (Optional)	EPS/ Rock Wool/ PU/ Glass Magnesium/ Aluminum Honeycomb, etc			
Connector (Optional )	"+" Shaped Aluminum Profile type/ Femal&Male type		"+" Shaped Aluminum Profile type	

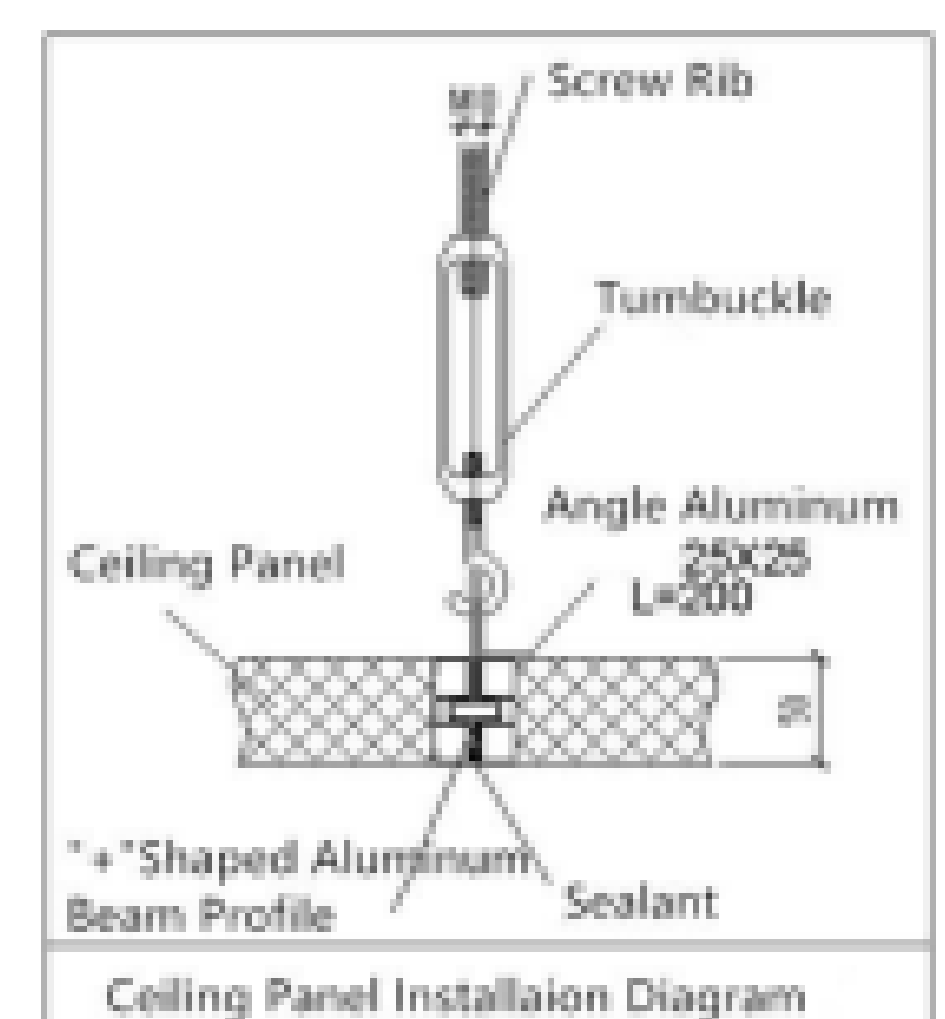
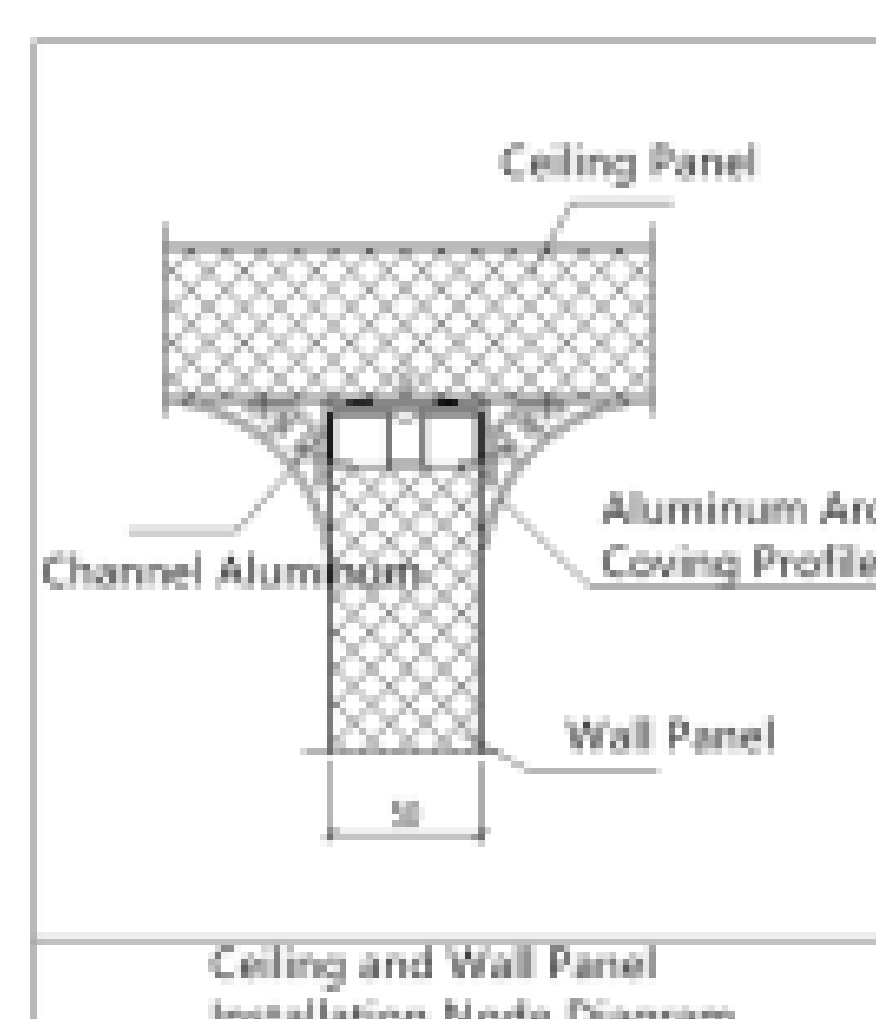
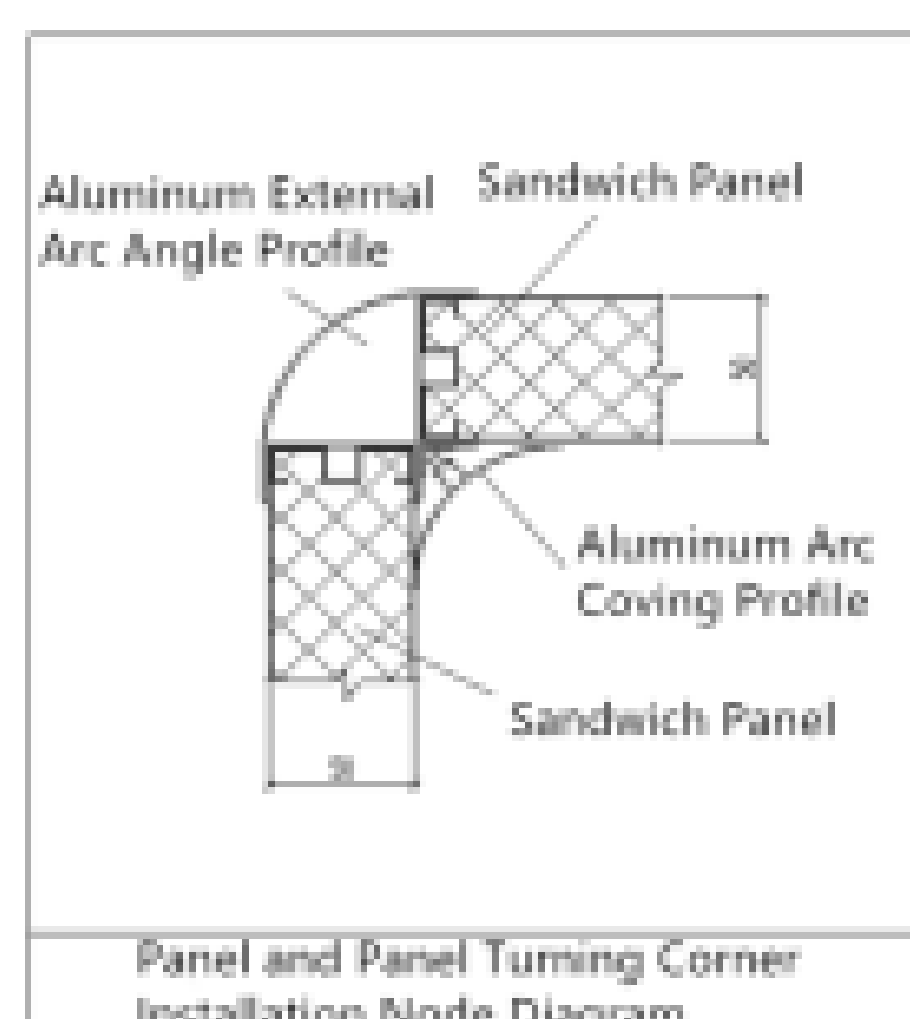
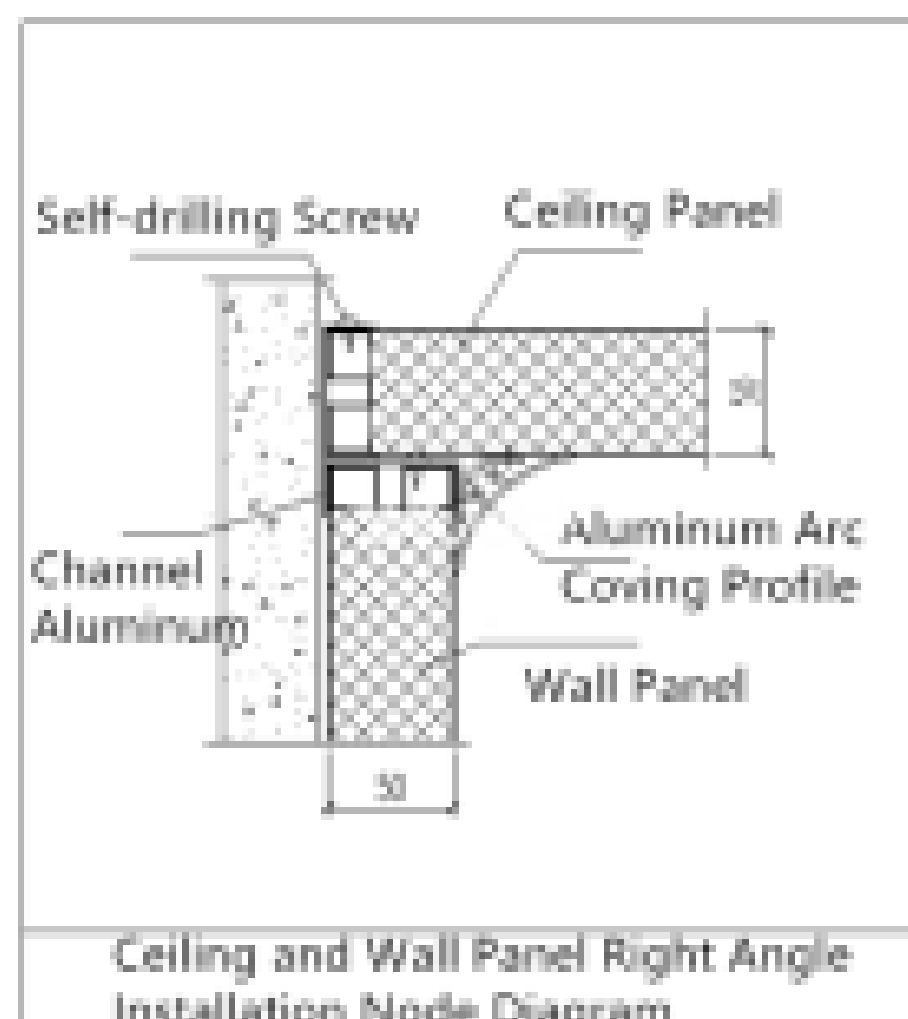




## Connection Images



## Aluminum Profile Connector



(829) 216-9224

Plaza Roaldi, local 308, El Millon, D.N.

✉ info@novasupplyrd.com

🌐 www.novasupplyrd.com

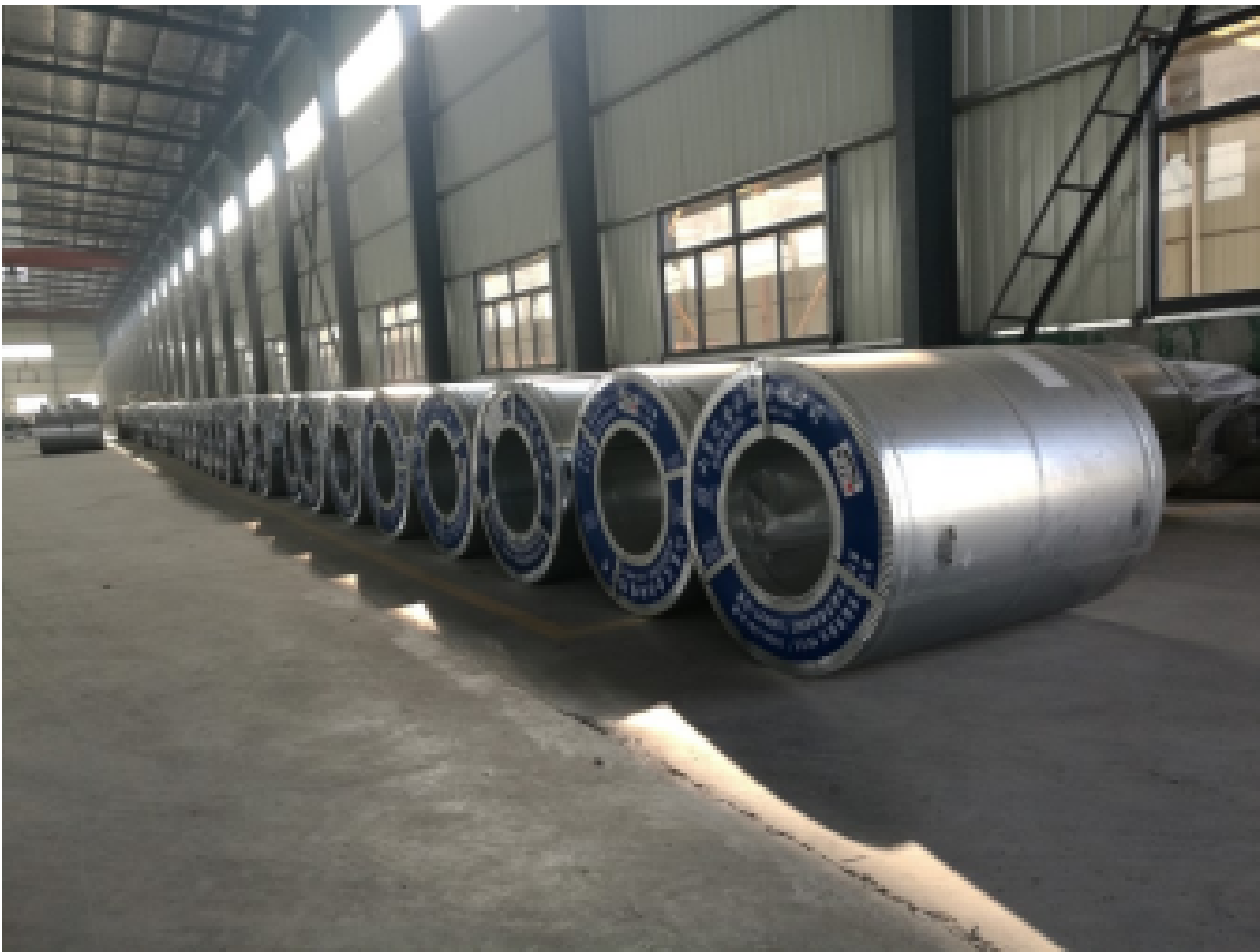
## Detailed Images



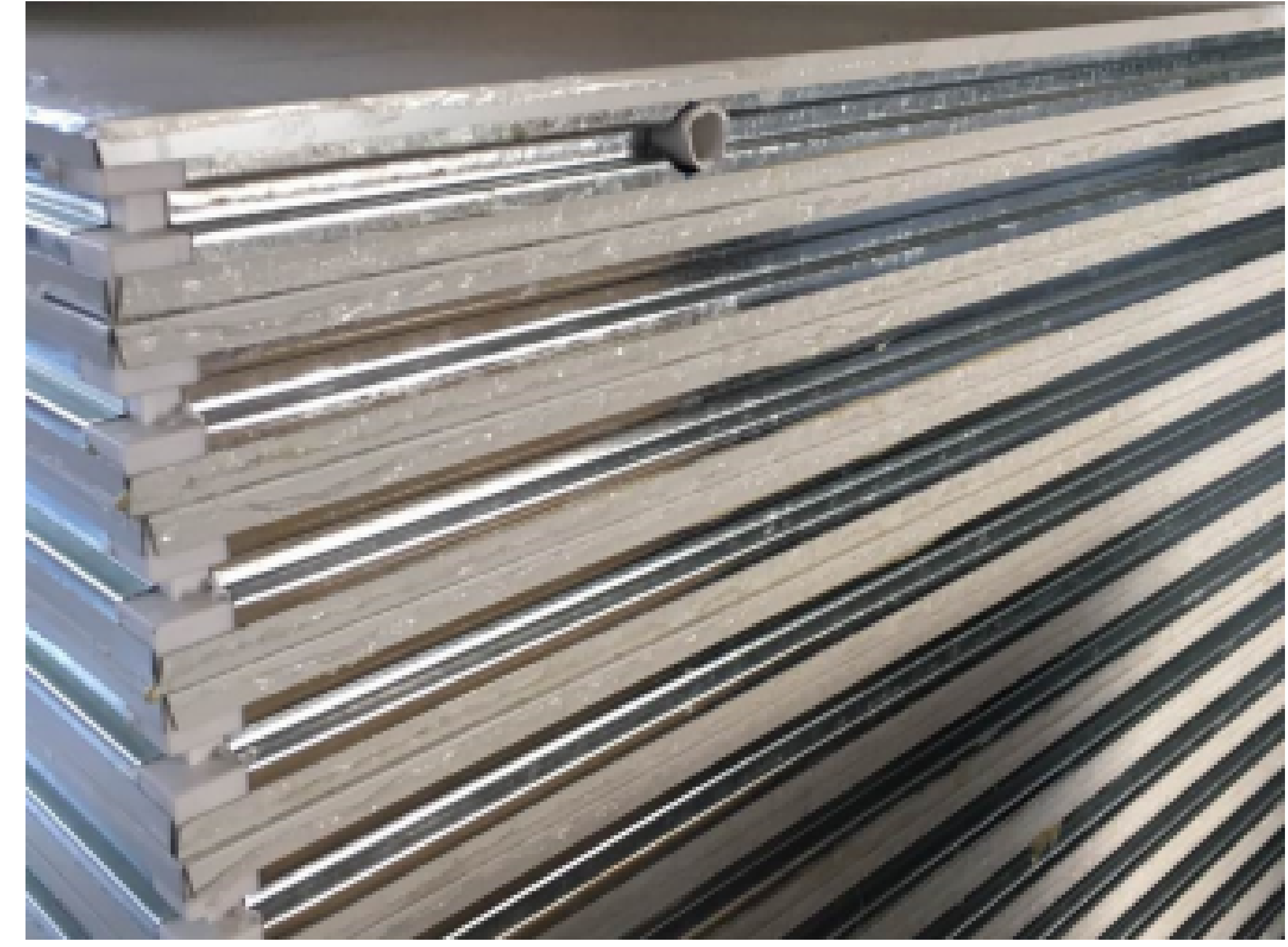
Flush with door, window, etc and conform to GMP standard.



Pre-embedded reinforcement for the opening of light fixture, air filters, etc.



Certified steel rolled sheet



Pre-embedded PVC conduit for wiring

